

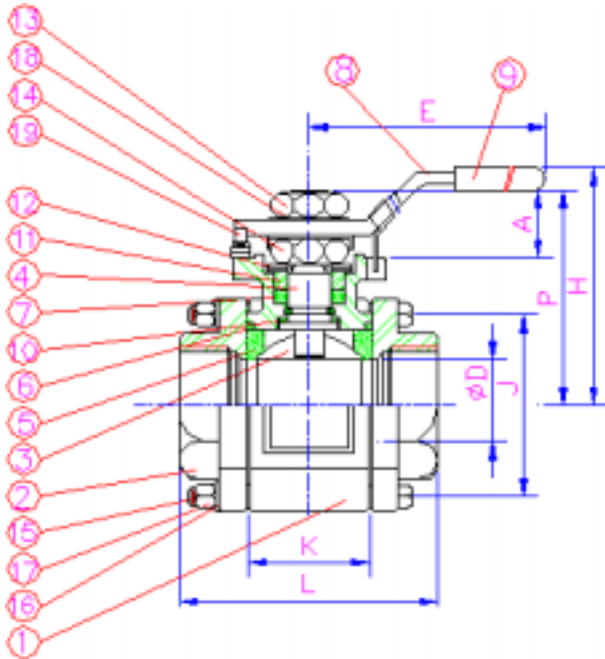
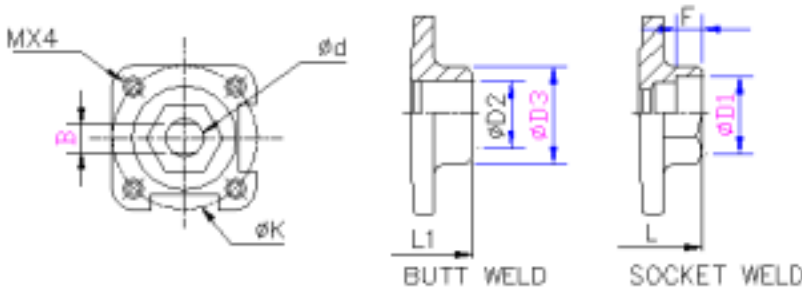
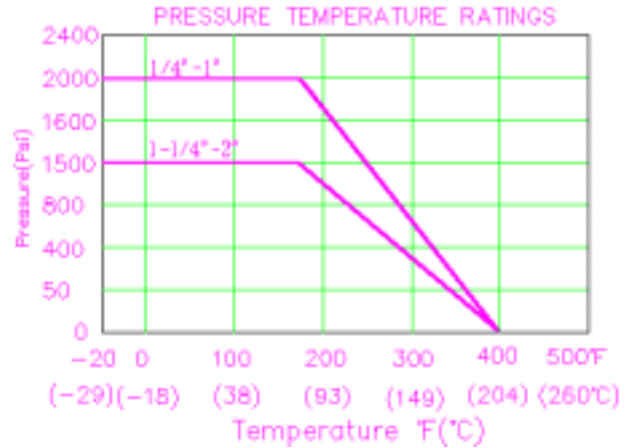
- For food and general chemical service applications.
- Adjustable stem packing.
- Blow-out-proof stem design.
- Body and end caps quality investment casting.
- In-line repairable.
- Available in carbon or stainless steel body construction.
- 100% tested by air under water at 100 psi, open and closed positions.
- Working pressure: 1/4" ~1" 2000 WOG ; 1 1/4" ~2" 1500 WOG.
- Temperature range: -20 to 400
- End types: Threaded, Socket, & Butt Weld.
- With ISO5211 Mounting Pad.



Three Piece Ball Valves

### DIMENSIONS ( mm )

SIZE	øD	øD1	øD2	øD3	F	H	L	E	B	øK	ød	A	P	W (kg)	M	K	J	Thickness
1/4"	11	14.1	9.2	13.7	9.5	56.5	70	121.5	5.5	36	9.4	13	40.5	0.62	M5	20.6	32	6
3/8"	11	17.5	12.5	17.1	9.5	56.5	70	121.5	5.5	36	9.4	13	40.5	0.6	M5	20.6	32	6
1/2"	11	22.4	15.8	21.3	9.5	56.5	70	121.5	5.5	36	9.4	13	40.5	0.58	M5	20.6	32	6
3/4"	14.3	27.4	21	27.1	14.3	60	74	121.5	5.5	36	9.4	13	44	0.8	M5	24.6	38.2	7.25
1"	20	34.2	26.6	34.1	15.9	74.5	99	151	7.4	42	10.7	19.2	47	1.5	M5	31.8	44	8.5
1 1/4"	25.4	43	35.1	42.2	17.5	77	110	151	7.4	42	10.7	22	64.5	1.96	M5	41.3	50.5	6.85
1 1/2"	31.8	49	40.9	48.3	19.1	86	117	178	8.6	50	14	25	76	2.96	M6	48.4	57	6.35
2"	38.1	61.11	52.5	60.3	22.2	92	128	178	8.6	50	14	22.5	79.5	4.14	M6	56.4	66.5	7.9



### MATERIALS LIST

No.	PART NAME	SPECIFICATION
1	BODY	ASTM A351 GR.CF8M/A216 WCB
2	END CAP	ASTM A351 GR.CF8M/A216 WCB
3	BALL	ASTM A351 GR.CF8M/CF8
4	STEM	S.S.316
5	BALL SEATS	PTFE
6	END SEAL	PTFE
7	STEM PACKING	PTFE
8	HANDLE	S.S.304
9	HANDLE SLEEVE	VINYL GRIP
10	THRUST WASHER	MG1241
11	GLAND	S.S.304
12	CUP SPRING	S.S.301
13	NUT	S.S.304
14	LOCK CAP	S.S.304
15	BOLTS	S.S.304
16	BOLT WASHERS	S.S.304
17	BOLT NUTS	S.S.304
18	WASHER	S.S.304
19	STOP PIN	S.S.304