

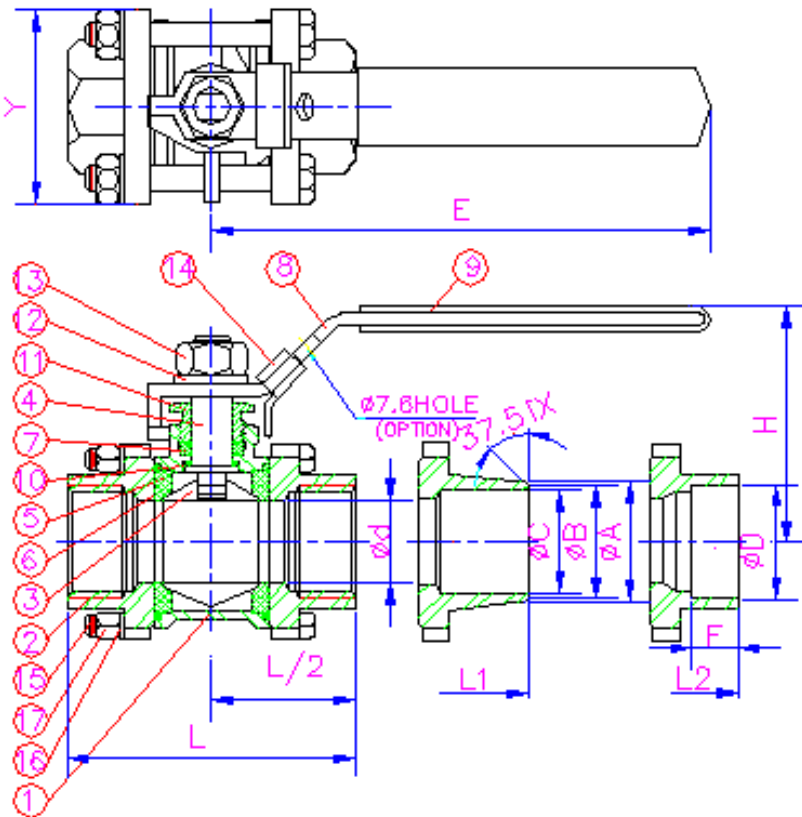
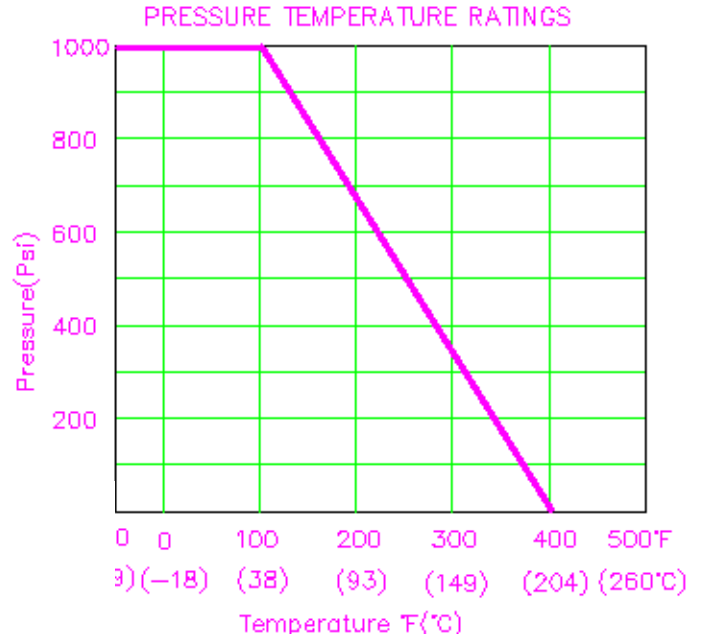
- For food and general chemical service applications.
- Adjustable stem packing.
- Blow-out-proof stem design.
- Body and end cap quality investment casting.
- In-line repairable.
- Available in carbon or stainless steel body construction.
- 100% tested by air under water at 100 psi, open and closed positions.
- Working pressure: 1000 WOG.
- Temperature range: -20 to 400 .
- End types: Threaded, Socket, & Butt Weld.



Three Piece Ball Valves

DIMENSIONS (inch)

SIZE	ød	L	L1	L2	H	E	øA	øB	øC	øD	F	Cv FACTOR	W (kg)
¼"	11.6	60	60	60	56	100	18	12	10	14	10.5	6.0	0.35
⅜"	12.5	60	60	60	56	100	18	16	13	17.5	10.5	12.0	0.43
½"	15	65.5	64.5	65.5	58	100	23	19	15.8	22	11	19.0	0.52
¾"	20	79	76	79	60	120	28	24	21	27.5	13.5	37.0	0.72
1"	25	86.0	86	86	70	148	35	31.5	26.6	34.5	13.5	64.0	1.02
1¼"	32	105	105	105	75	148	43	39	35	43.5	14	103	1.72
1½"	38	119	120	120	86	164	50	45	40.5	49.2	15	143	2.42
2"	50	133	134	134	93	164	61	56	52.5	61.2	17.5	360	3.6
2½"	65	163	163	163	130	248	75	69	65	77	18.5	440	7.52
3"	80	184	184	184	137	248	95	85	80	89.9	20	520	10.8
4"	100	228	228	228	180	290	120	105	101	115	25	820	19.5



MATERIALS LIST

No.	PART NAME	SPECIFICATION
1	BODY	ASTM A351 GR.CF8M
2	END CAP	ASTM A351 GR.CF8M
3	BALL	ASTM A351 GR.CF8M
4	STEM	S.S.316
5	BALL SEATS	PTFE
6	END SEAL	PTFE
7	STEM PACKING	PTFE
8	HANDLE	S.S.304
9	HANDLE SLEEVE	VINYL GRIP
10	THRUST WASHER	PTFE
11	GLAND	S.S.304
12	HANDLE WASHER	S.S.304
13	HANDLE NUT	S.S.304
14	LOCKING PLATE	S.S.304
15	BOLTS	S.S.304
16	BOLT WASHERS	S.S.304
17	BOLT NUTS	S.S.304