

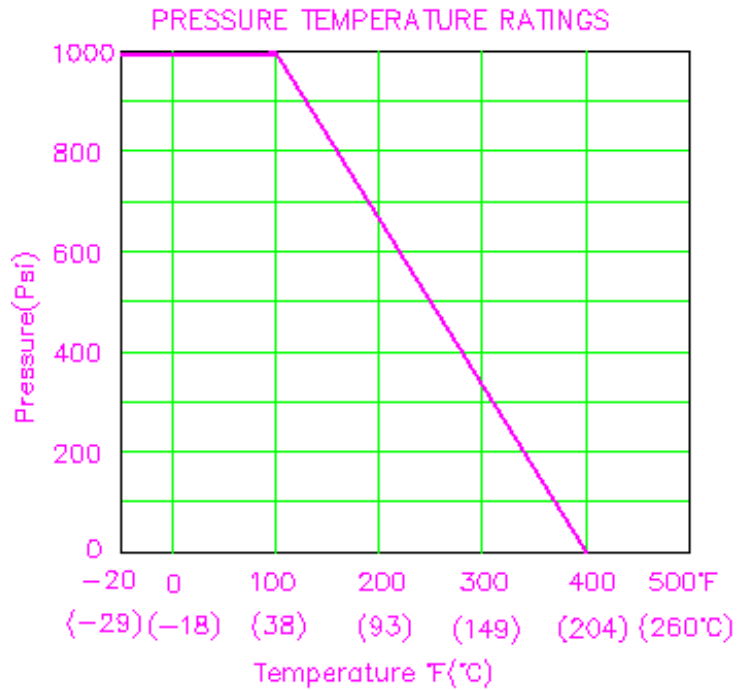
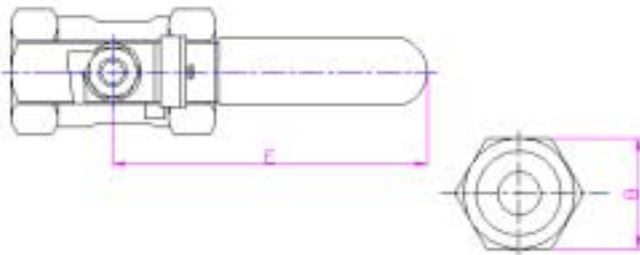
- 1-Piece Ball Valve Economy Type
- Sizes range: 1/4"~ 2" (DN 8 ~ DN 50)
- Port availability: Reduce port
- Working pressure: 1000WOG (PN63)
- Temperature rating: - 20°F ~ 400°F (- 29°C ~ 200°C)
- Body material: CF8M(1.4408) or CF8(1.4308) or WCB(1.0619)
- Trim material: Stainless Steel Ball & Stem
- End connection: Threaded
- Seat material: PTFE
- Blow-out proof stem design
- Available with handle locking plate



One Piece Ball Valves

### DIMENSIONS ( inch )

SIZE	d	L	B	H	E
1/4"	5	39	17	32	66
3/8"	7	44	21	38	77
1/2"	9.2	56.5	25	42	95
3/4"	12.5	58	32	45	95
1"	15	71	39	58	109
1 1/4"	20	78	50	60	109
1 1/2"	25	83	53	65	138
2"	32	100	66.5	70	138



### MATERIALS LIST

No.	PART NAME	SPECIFICATION
1	BODY	ASTM A351 GR. CF8M
2	INSCREWED SEAT RETAINER	S.S.316
3	BALL	ASTM A351 GR. CF8M
4	STEM	S.S.316
5	BALL SEAT	PTFE
6	CAP SEAT	PTFE
7	PACKING	PTFE
8	HANDLE	S.S.304
9	HANDLE SLEEVE	VINYL GRIP
10	THRUST WASHER	PTFE
11	GLAND	S.S.304
12	WASHER	S.S.304
13	HANDLE NUT	S.S.304
14*	LOCKING PLATE	S.S.304

\*optional

